

ThedaCare

CHAT

Engaging Community to Improve Health

2023 WCMEW Summit



October 30 2023

lifeinspired.



CHAT Orientation Agenda

- What is ThedaCare?
- What creates health?
- How do we know what issues to focus on?
- The CHAT Model and Results
- The Rural Health Initiative
- Q & A

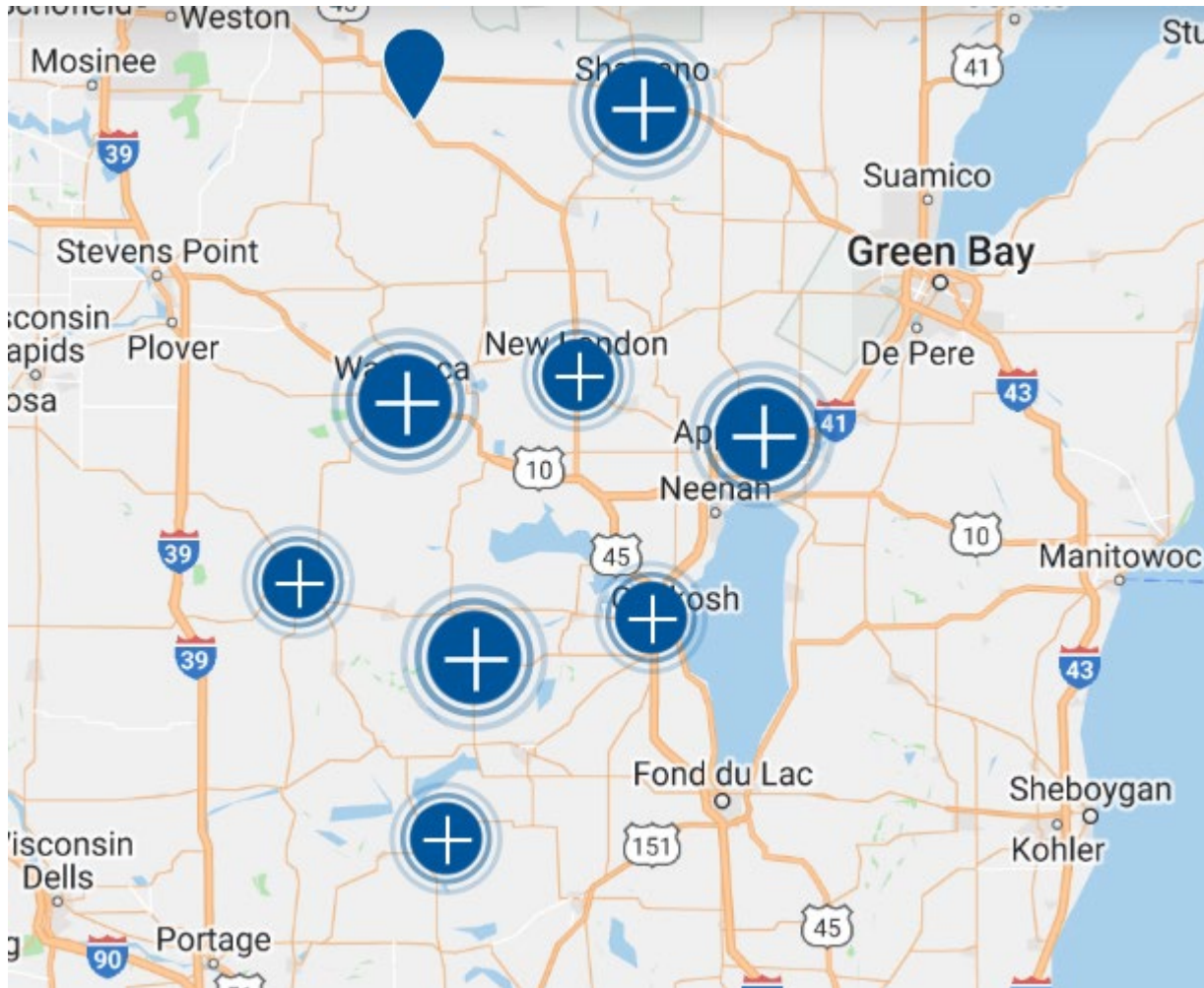
lifeinspired.

What is ThedaCare?



*life*inspired.

ThedaCare Mission



*“To improve the **health and well-being** of our communities by empowering each person to live their unique, best life.”*

*life*inspired.

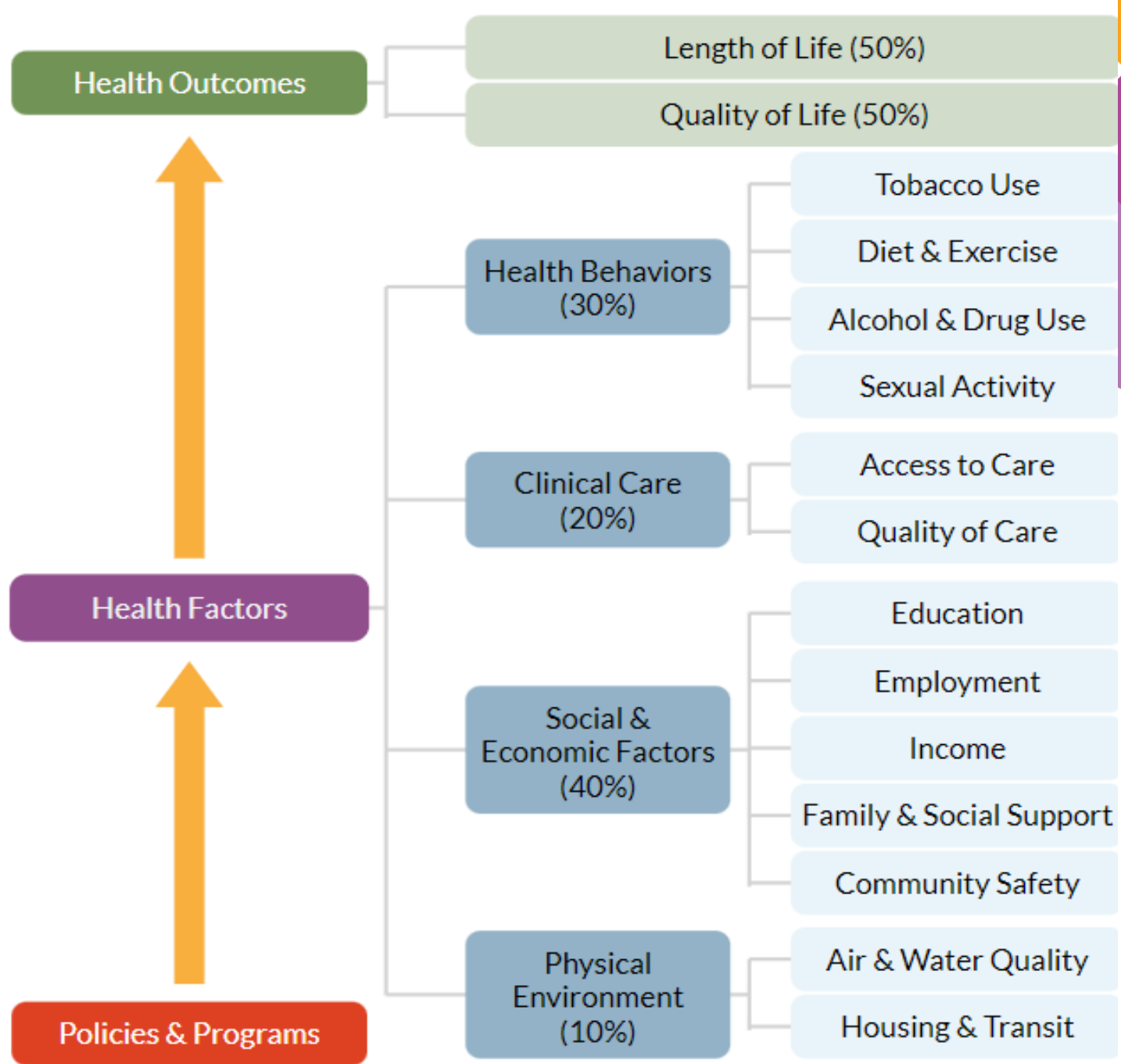
What creates health and well-being?



*life*inspired.

What creates *health*?

SOURCE: UNIVERSITY OF
WISCONSIN POPULATION HEALTH
INSTITUTE



How do we know what issues
to focus on?



*life*inspired.



Community Health Needs Assessment (CHNA)
determines focus of 3-year plans

Example of CHNA

*life*inspired.

Community Health Assessment Process



2023-2025 Community Health Priorities



- Mental Health and Substance Use
- Social Needs
- Strong Start to Life
- Regional Alignment
- **Focus on disproportionately affected**

lifeinspired.

The CHAT Model



*life*inspired.

“You can’t solve a
problem you don’t own!”

*life*inspired.

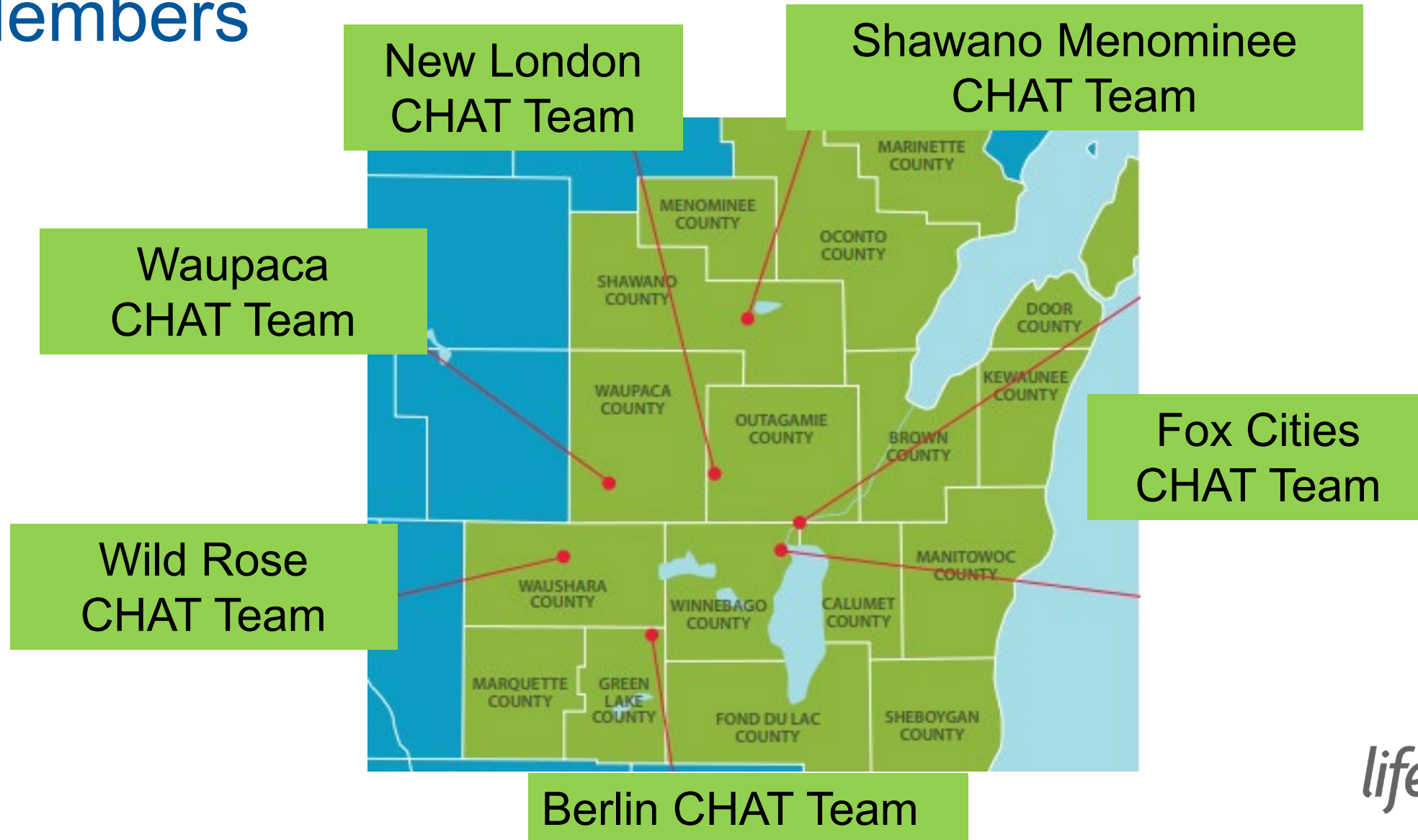


CHAT Teams are groups of diverse people who help study health issues and co-create solutions.



*life*inspired.

6 CHAT Teams = more than 110 CHAT Members



CHAT Mission

CHAT catalyzes, through education and collaboration, creative projects and opportunities having the potential to significantly and measurably improve community health.

lifeinspired.



CHAT Vision

All sectors of the community are engaged in actively creating physical, mental, social, and spiritual health and well-being for our residents.

*life*inspired.



CHAT Plunge – “The unvarnished truth”



*life*inspired.

Plunge Goals and Outcomes



Goals

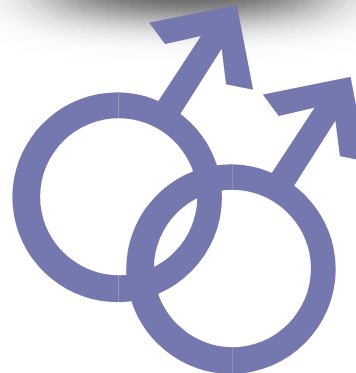
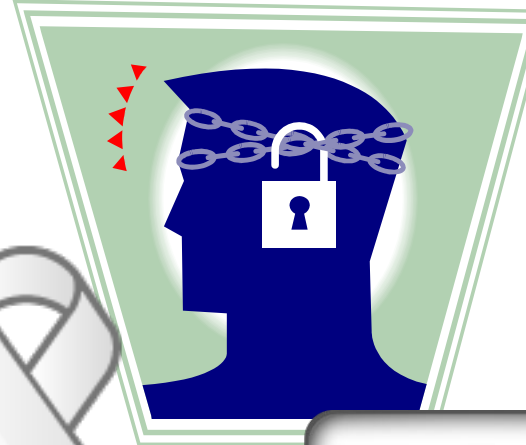
- Education
- Connection
- Initiatives

Outcomes

- People “Get it”
- Stereotypes melt
- Passions ignite



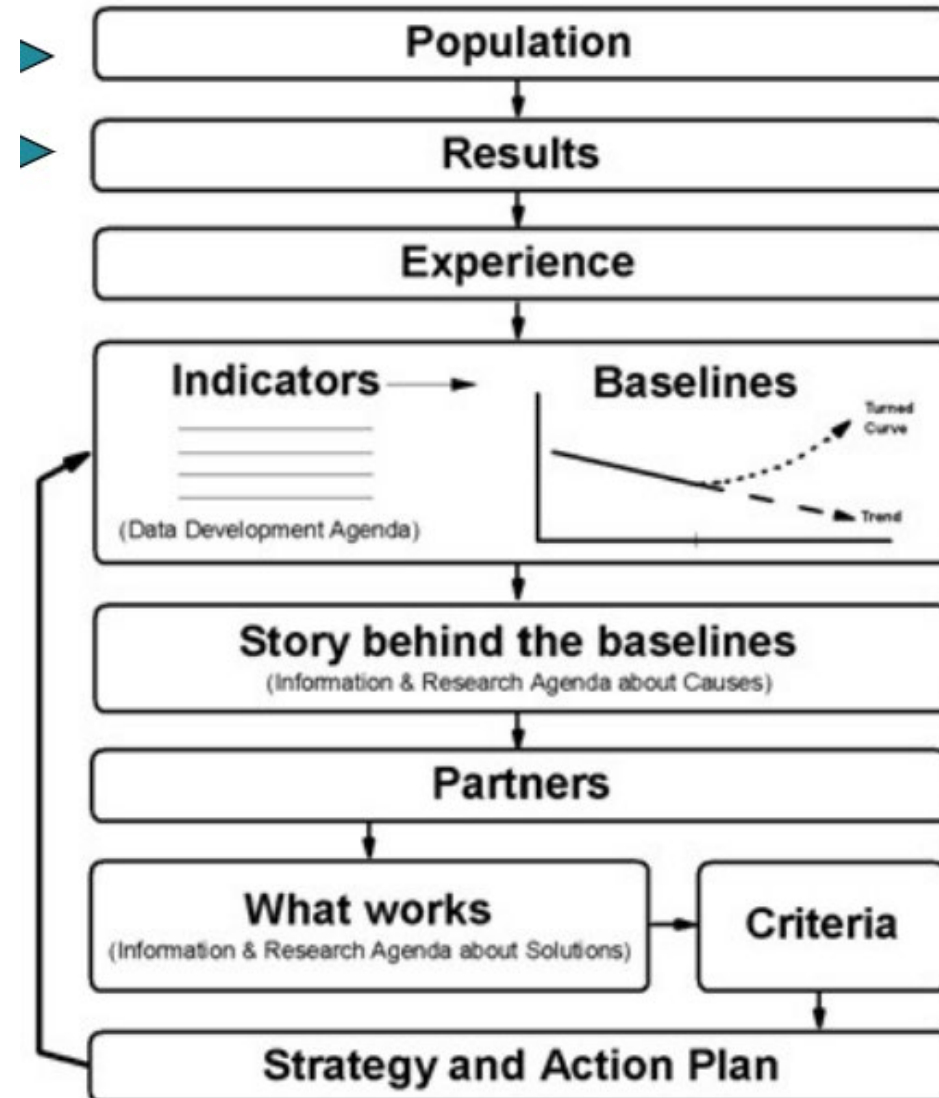
CHAT Plunge Topics



lifeinspirea.

Plunge Debriefing

From talk to action...the
**Results-Based
Accountability (RBA)**
Framework





NEW Mental Health Connection



*life*inspired.



**“Make the Ride
Happen”
and
Rural
Transportation**

*life*inspired.



ED to Recovery+

*life*inspired.

CHAT Initiatives by Vital Condition



Belonging & Civic Muscle

- Trauma Sensitive Communities
- Common Ground
- Common Ground Golden Rule Civil Dialogues
- Walk in Their Shoes Immigrant Experience

Basic Needs for Health & Safety

- Be Well Fox Valley
- Living the Waupaca Way
- Good to Go
- Community Gardens
- Food Pantry Refrigeration
- Bridges Healthy Cooking School
- Waupaca Heroin Task Force
- Shawano Drug Court
- Drug Take Back Campaign
- Employer Workshop Series on Drugs & Alcohol
- Binge Drinking Campaign
- Cuidate
- NEW Mental Health Connection
- Rural Health Initiative
- Primary Care MH Integration
- FV Advanced Care Planning
- Voices of Men
- INCLUDE LGBTQ Initiative
- Emergency Department to Recovery Plus

Life Long Learning

- STAR Program
- Litwork Literacy Initiative
- Early Childhood Home Visitation
- Modified School Start Times
- First 5 Fox Valley Early Childhood System and Care Navigator
- Shawano Area Early Childhood Partnership

Meaningful Work & Wealth

- Great Futures Mentoring
- Financial Literacy Curriculum
- Mentoring Programs

Humane Housing

- Sober Living Homes
- Oxford Houses

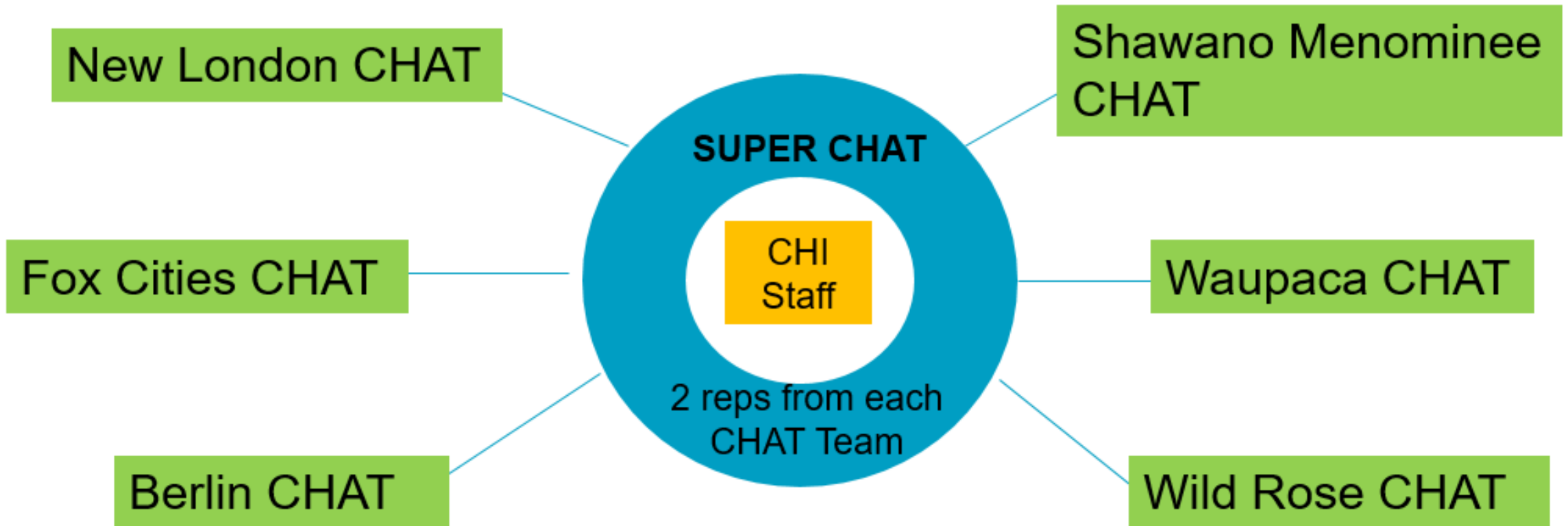
Reliable Transportation

- Make the Ride Happen
- New London Rural Transportation Initiative

Thriving Natural World

- Grace Trails

CHAT Structure



Each CHAT Team co-led by community member and hospital president

CHAT Guiding Principles



“You can’t solve a problem you don’t own”

Start with existing assets

Focus Upstream

Think “Abundance”
...we have all we need to address this issue.

Measure

Willing to fail

CHAT Funding



Funding Source	CHAT Teams Supported
<ul style="list-style-type: none">• CHAT Fund within Community Foundation for the Fox Valley Region Inc.	<ul style="list-style-type: none">• Fox Cities CHAT
<ul style="list-style-type: none">• ThedaCare Community Health• ThedaCare Family of Foundations	<ul style="list-style-type: none">• Berlin CHAT• New London CHAT• Shawano Menominee CHAT• Waupaca CHAT• Wild Rose CHAT



ThedaCare®



Rural Health Initiative

*life*inspired.



Rural Health Initiative

Mission: To improve the health and well-being of our rural communities by empowering each person to live their unique, best life. .

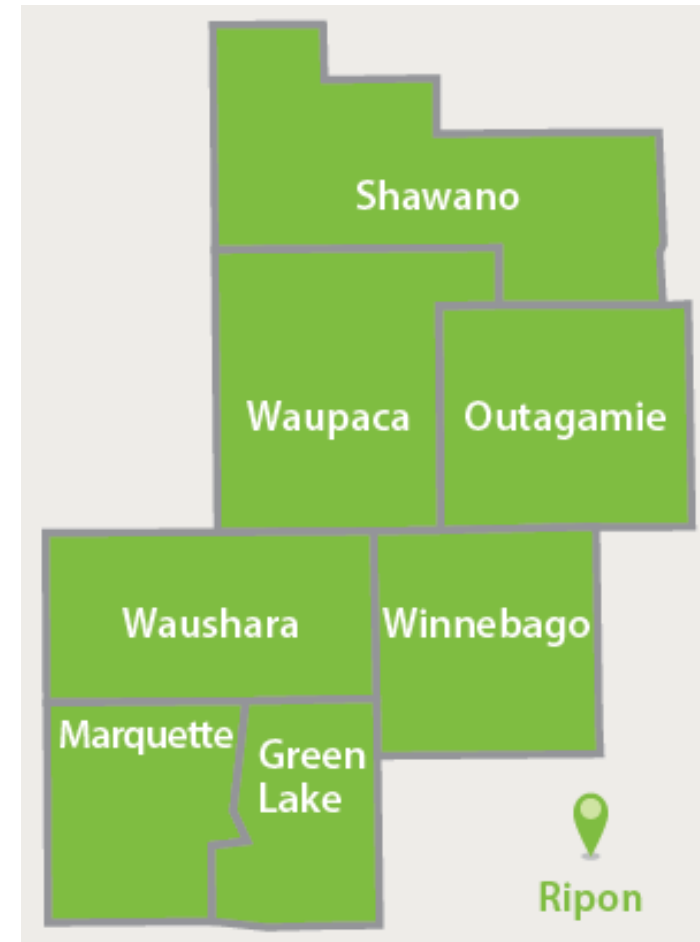
Outreach program designed to address growing concerns regarding health and safety issues facing today's rural families. At the center of this program are professionally trained **Outreach Health Specialist** who make "house calls" to interested rural families providing "**Kitchen Wellness**".





Rural Health Initiative

- The ThedaCare Rural Health initiative serves **seven** local Wisconsin counties improving the health and well-being of rural communities and empowering each person to live their best healthy life.
- Many of the services we offer are grant-funded, however, there are billable services as well.
- There are two primary teams
 - Outreach Health Specialists (OHS)
 - Nurse Practitioners
- Additional Supporting Team Members
 - Dietician
 - Ambulatory Pharmacist





Who We Serve

- Ages 18 years and older
- Past Common Participants included anyone who contributed to agriculture:
 - Agribusinesses
 - Family Farms (*with and without hired staff*)
 - Amish
 - Former Farmers
 - Large Dairy's with Latino Workers – *Spanish Interpreters are provided, as needed.*
- Resides in rural zip code of ThedaCare service area (*excludes metro areas of Appleton, Neenah, Menasha and Oshkosh*)
- Those who don't seek care or have barriers to care



REF 142

lifeinspired.



Grant News 2021-2024

CDC Health Equity Grant

- Expanded services from three **Shawano, Waupaca, rural Outagamie** to seven counties, adding **Waushara, rural Winnebago, Green Lake, and Marquette** counties.
- **Hired 6 additional Outreach Health Specialists** to provide outreach to rural individuals and screen for social determinants of health along with improving management of chronic diseases.





Services Provided

In-Home/On-Site Preventive Health Screening(s) Visits

- A professionally trained Outreach Health Specialist comes to the participants home or agribusiness at a time that is convenient for them
- Visits are causal and take about 20 minutes per person
- *No Cost to Participants*

Health Risk Assessment (HRA)

- HRA with immediate test results for:
 - *Cholesterol*
 - *Blood Glucose*
 - *Body Mass Index (BMI)*
 - *Triglycerides*
 - *Blood Pressure*

Health Coaching

- Provide information on topics such as *Preventive Heart Disease, Stroke, Nutrition, Exercise, and General Lifestyle*
- Referral Information to *Health Care Providers and to Local Community Resources*



inspired.



Grant News 2021-2024

CDC Supplement #4

- Work will focus on the seven rural counties to ramp up coordinated care services
- During 2022 we have added the following to our Care Team staff:
 - Two Nurse Practitioners
 - Dietician
 - Ambulatory Pharmacist
- This will help removed barriers to making virtual calls and expand telehealth services.
- **Vaccine assistance and education**





Nurse Practitioner Services

Core services are provided at no cost and include education, and an initial assessment for concerns related to chronic disease and medication.

Services provided for a fee (billed to insurance or uninsured discount):

- **Acute Care:** cold & flu symptoms, sore throat, anxiety, depression, urinary or abdominal concerns or symptoms related to ears, eyes, or sinuses
- **Minor Injuries:** sprains, bruises, cuts, burns, joint pain
- **Minor Skin Conditions:** rashes, lesions, athlete's foot, minor skin infections
- **Medical Procedures:** ear cleaning, splinter removal, wart treatment
- **Rapid Tests:** Urine, Influenza, Strep
- **Medication education**
- **Medicare Wellness Visits**

Virtual or in-home visits are an extension of your Primary Care Physician (PCP).

*life*inspired.



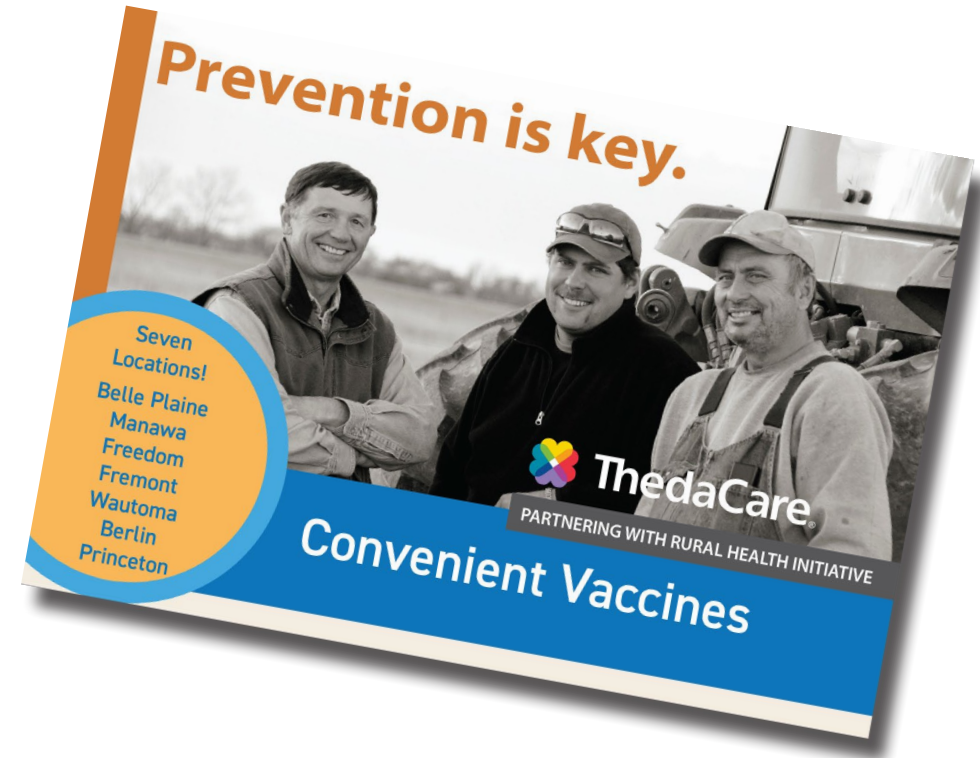
Convenient Vaccine Clinics

- **Convenient Vaccine Clinics** – Low and reduce cost based on coverage

Offering Four Vaccines:

- Tdap: Tetanus
- Shingles (Shingrix)
- Pneumococcal (PPSV23)
- Influenza (Flu)

- **Six Townhall Locations**



Serving Shawano, Waupaca, Rural Outagamie, Waushara, Green Lake, Marquette, and Rural Winnebago Counties. Excludes Appleton, Neenah, Menasha, and Oshkosh residents.

lifeinspired.



Thank You!!

Contact

Paula Morgen

paula.morgen@thedacare.org

Rhonda Strebel

rhonda.strebel@thedacare.org

www.thedacare.org/ruralhealth

*life*inspired.